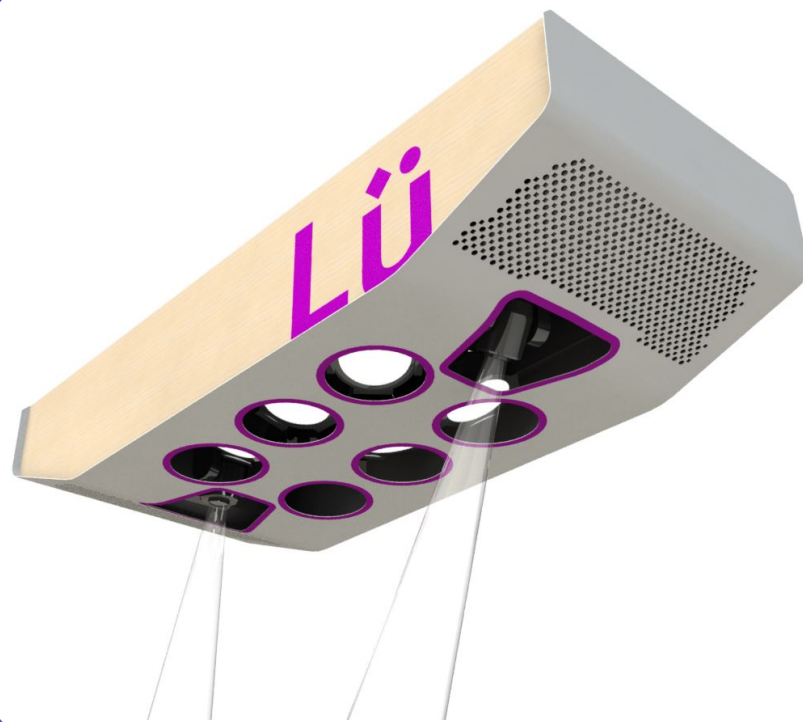
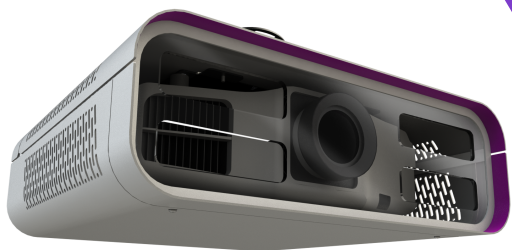


# Lü INTERACTIVE PLAYGROUND



## ÜNO CONFIGURATION

EN - User Manual

# About This Guide

The Lü Interactive System User Manual has basic product information such as safety and operation.

## Disclaimer

This information and specifications contained in this user manual are subject to change without notice.

## Important Safety Instructions

1. Read and keep these instructions.
2. Always connect the product to a grounded circuit
3. Do not use this apparatus near water.
4. Clean only with a dry cloth.
5. Do not block any ventilation openings. Install in accordance with the manufacturers instructions.
6. If mounting the product overhead, make sure there is adequate support for the product's weight and always secure the product using a safety cable.
7. Only use attachments/accessories specified by the manufacturer.
8. Unplug this apparatus during lightning storms or when unused for long periods of time.
9. Do not use Lü system in an environment where temperatures exceed +40°C (104°F).
10. Refer all servicing to qualified service personnel. Servicing is required when the apparatus has been damaged in any way, such as power-supply cord or plug is damaged, liquid has been spilled or objects have fallen into the apparatus, the apparatus has been exposed to rain or moisture, does not operate normally, or has been dropped.
11. To completely disconnect AC power from this apparatus, the power supply cord must be unplugged.
12. Do not expose this apparatus to dripping or splashing and ensure that no objects filled with liquids.
13. Lü loudspeakers are easily capable of generating sound pressure levels sufficient to cause permanent hearing damage to anyone within normal coverage distance. Caution should be taken to avoid prolonged exposure to sound pressure levels exceeding 90 dB.

**IMPORTANT:** Do not modify this product! Changes or modifications not expressly approved by the manufacturer could void the user's warranty.

# Lü Limited Warranty

## **One-Year System Limited Warranty.**

What Is Covered: Lü Interactive Playground inc. (“Lü”) warrants to the original purchaser of the system this limited warranty statement that the product will be free from defects in workmanship and materials for a period of one (1) year from the date of original purchase.

## **Two-Year Projector Limited Warranty and 90-Day Lamp Limited Warranty.**

What Is Covered: Lü Interactive Playground inc. (“Lü”) warrants to the original purchaser of the Epson projector product enclosed in Lü system, with this limited warranty statement that the product will be free from defects in workmanship and materials for a period of two (2) years from the date of original purchase. This limited warranty applies only to the projector and not to the projector lamp, which carries a limited warranty period of ninety (90) days from the date of original purchase. For warranty service, you must provide proof of the date of original purchase.

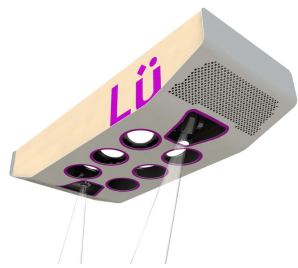
## Congratulations with the purchase of this Lü Interactive Playground!

This system was crafted with passion by the team at SAGA in Canada and we really hope you will enjoy using it.

## What Is Included

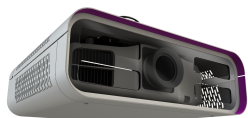
This system was installed by our professional partners in respect of all local laws and regulations. You are now equipped by:

### (3) ceiling mounted modules:



#### Light & Sound Module

6x 200w LED PAR to manage the ambient lighting and general colors, 2x Robotised LED light fixtures for special light effects and a powerful 2000 watts sound system.



#### Projector Module

5500 lumens WXGA projector protected in a custom enclosure



#### Camera Module

3D camera system.

### (2) remote controllers:

Projector's remote controller

Lü system remote controller

# Operation

## Playground dimensions and specifications

### Interactive screen

Maximum size: 20' (5.8m) Large x 11' (3.3m) High  
Must be a flat, solid, bright surface.

### Game Area

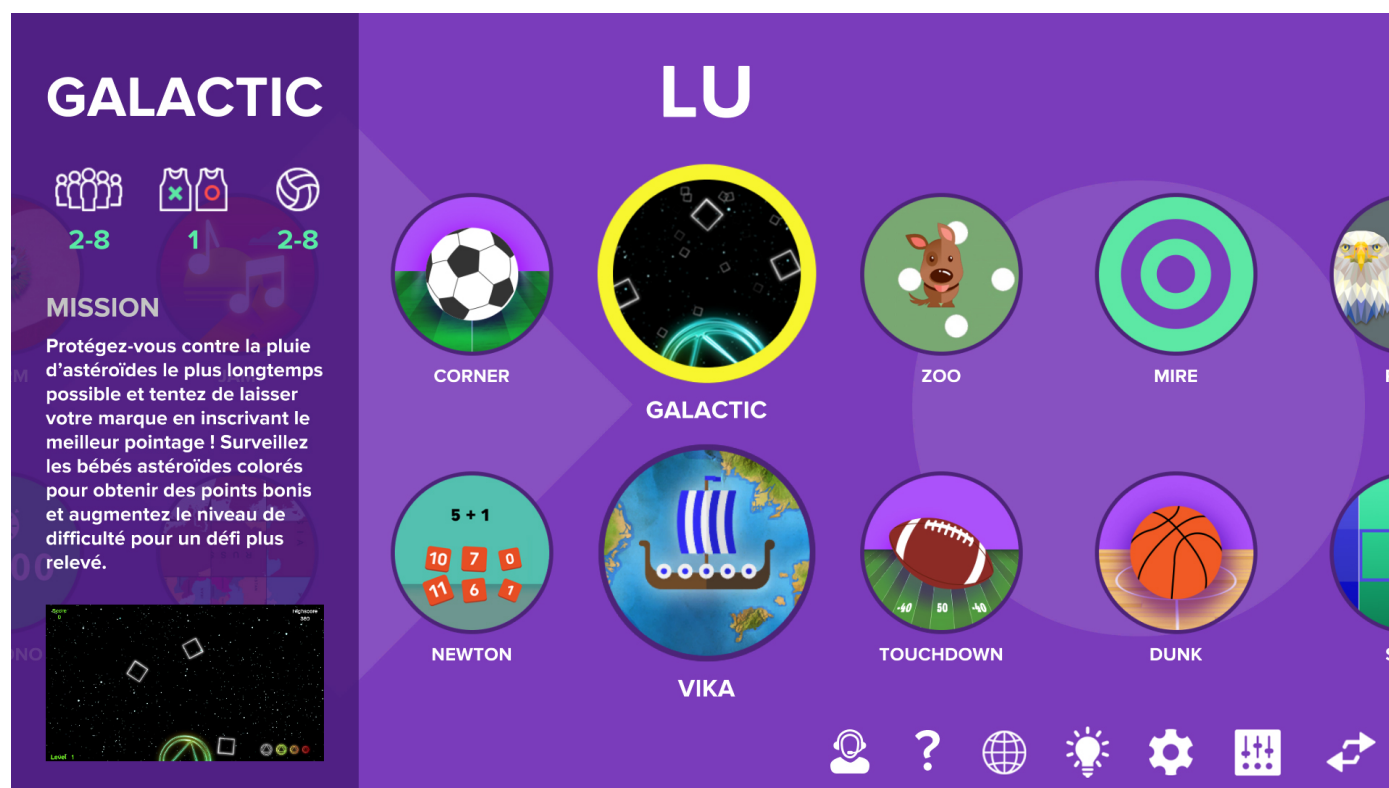
Centred in front of the interactive screen  
Recommended size: 30' (9m) Large x 30' (9m) Long  
Minimum ceiling heights: 14' (4.3m)  
Maximum ceiling heights: 28' (8.5m)

To maximize immersion, ambient lighting must be controllable. When our system is in operation, general lights must be turned off and no window should allow direct sunlight in the room.

# Operation

## Lü homepage

The round boxes represent the available games.  
Select a game or an option using the yellow frame.



User support

Tutorials

Internet browser

Turn on/off the lights

Settings menu

Light menu

Freeplay mode

# Operation

## Remote controller





# Operation

## Remote controller - Shortcuts

### General operations

Turn ON/OFF lights (Main Menu): F1

Volume UP: V+

Volume DOWN: V-

Exit Game: Esc + ENTER

Pause Game: SPACE BAR

Choose Game: ←, ↑, →, ↓

Move Selection: ←, ↑, →, ↓

Begin Game: ENTER or OK

Select : ENTER or OK

Exit Lü / Go back to Windows Desktop : Win + D

Move Mouse: Use Trackpad

Left click: One Trackpad Click or Left Click Button

Right click: Double Trackpad Click or Right Click Button

Mute : Mute Button

Drag with mouse : Click on the left click button while moving finger on the trackpad

### Galactic Game

Go to next level: N

### Puzz Game

Highlight errors: B

Change image: N

### Target

Display settings: O

Reset timer and points:: R




# Operation

## Calibration

Calibration will adjust the camera used to detect balls on the wall. Once the system is calibrated, it is not necessary to repeat the operation each time. The system should only be calibrated when you feel that the contact between the ball and the wall is not accurate. To calibrate the system, follow the steps below:

1. Select the  button in the setting menu.

2. Click on the  button.

3. While the system is calibrating, a calibration grid will appear and after a few seconds the message “Calibration Successful” will display.

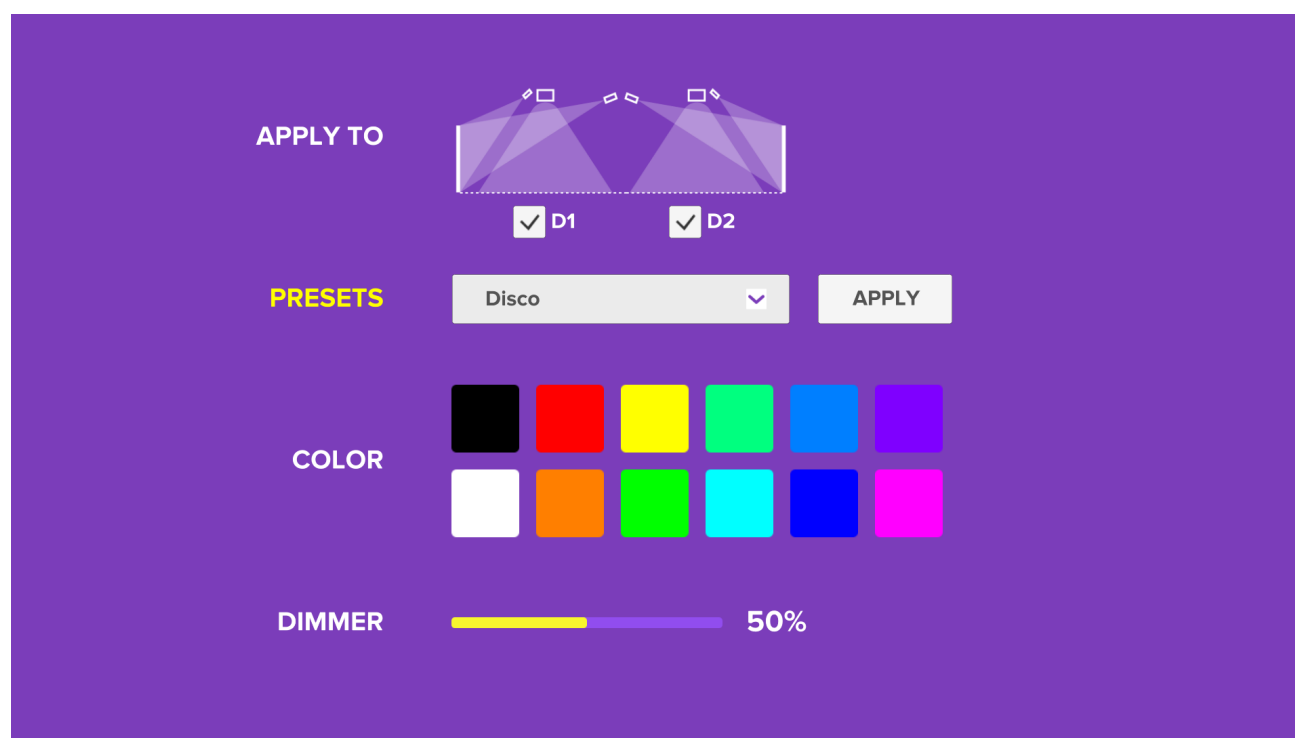
4. Press “Esc” and “Enter” to return to the homepage.

5. Throw a ball into the white section to confirm that the contact of the ball on the wall is now adjusted.

# Operation

## Lighting Application

With the Lü system, you can control the different spotlights for personalized lighting of the room according to the ongoing event (corporate event, school activity, intra-company challenge, fair, gala, show, etc.). To personalize lighting, follow these steps:



1. Select the side of the gym you want to control (D1, D2 or both)
2. To select from the preset list, choose from the dropdown menu and click on the Apply button.
3. To select a color, click on the color you want.
4. You can always adjust the general light level using the *MASTER LIGHT LEVEL* slider.

# Troubleshooting

## **How to turn computer ON?**

Computer will automatically boot connected to a power alimentation. To reboot it, shutdown the power alimentation, wait one minute, and turn it back on.

## **How to turn the projector ON?**

To turn the projector ON, first make sure the modules are powered. Then, press the “ON” button using the projector remote and wait for the image to be displayed. The projector will also boot automatically when it receives electrical power.

# Recommended Servicing

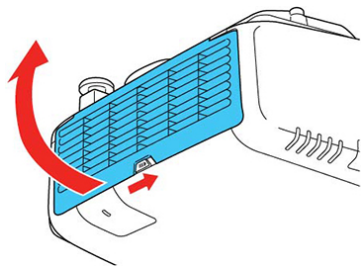
## Cleaning the Air Filter

You need to clean the projector's air filter in the following situations:

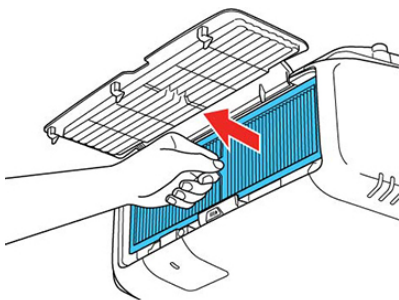
- The filter or vents get dusty.
- You see a message telling you to clean it.
- The projector's Filter light flashes orange.

1. Turn off the projector, wait for the projector to beep, and unplug the power cord.

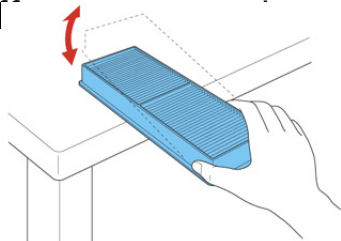
3. Slide the air filter cover latch and open the air filter cover.



4. Pull the air filter out of the projector.



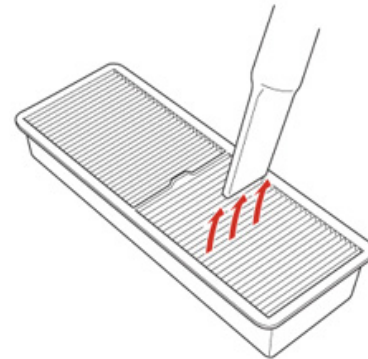
4. Tap each side of the air filter 4 to 5 times to shake off



### Caution:

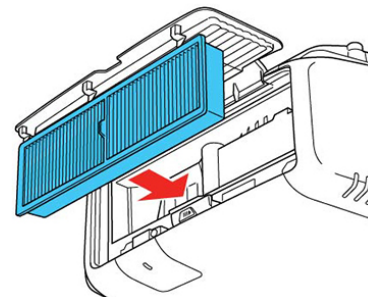
Do not use excessive force when tapping the air filter, or it may crack and become unusable. Do not rinse the air filter in water, or use any detergent or solvent to clean it. Do not use canned air; the gases may leave a residue, or push dust and debris into the projector's optics or other sensitive areas.

5. Vacuum the front of the air filter (the side with the tabs) to remove any remaining dust.



**Note:** If dust is difficult to remove or the air filter is damaged, replace the air filter.

6. Place the air filter back in the projector as shown and push gently until it clicks into place.



7. Close the air filter cover.

# Technical Specifications

			
	<b>CAMERA MODULE</b>	<b>LIGHT &amp; SOUND MODULE</b>	<b>PROJECTOR MODULE</b>
<b>INSTALLATION POSITION*</b>	16' (4.9m) from the wall 18' (5.5m) high	18' (5.5m) from the wall 20' (6m) high	30' (9m) from the wall 18' (5.5m) high
<b>SIZE</b>	12" L x 12" L x 8" H 30 x 30 x 20 (cm)	33" L x 84" L x 20" H 84 x 213 x 50 (cm)	22" L x 20" L x 10" H 56 x 50 x 25 (cm)
<b>WEIGHT</b>	10 kg 33 lbs	125 kg 275 lbs	25 kg 55 lbs
<b>RIGGING</b>	1.5" (3.8cm) pipe mounting bracket	4 Hanging Points (+2 rig points for installation)	1.5" (3.8cm) pipe mounting bracket
<b>POWER CONSUMPTION</b>	100-240V - 75W	100-240V - 1000W	100-240V - 462W

\* Installation positions are optimal positions, but can be adapted to different spaces when required. Contact us for more details.

# Complete documentation

For more detailed informations about some selected Lü interactive playground components:

## **Video projector - Epson 5520w projector**

<https://files.support.epson.com/docid/cpd5/cpd52631.pdf>

## **Loudspeakers - Electro-Voice ZLX 12P**

[http://www.electrovoice.com/binary/ZLX\\_F01U319253\\_en.pdf](http://www.electrovoice.com/binary/ZLX_F01U319253_en.pdf)

## **PC Computer - Intel NUC**

<https://www.intel.com/content/www/us/en/products/boards-kits/nuc/kits/nuc6i5syh.html>

## **DMX Distribution - Chauvet Data Stream 4**

[https://www.chauvetdj.com/wp-content/uploads/2015/12/Data\\_Stream\\_4\\_UM\\_Rev2\\_WO-1.pdf](https://www.chauvetdj.com/wp-content/uploads/2015/12/Data_Stream_4_UM_Rev2_WO-1.pdf)

## **Wireless microphone - Shure BLX14R**

<http://pubs.shure.com/guide/BLX4R/en-US>

# Contact informations

**For support, any questions or comment on this product:**

+1 418 781-0797

[support@play-lu.com](mailto:support@play-lu.com)

202-707 St-Vallier E. St  
Quebec, QC, Canada  
G1K 3P9